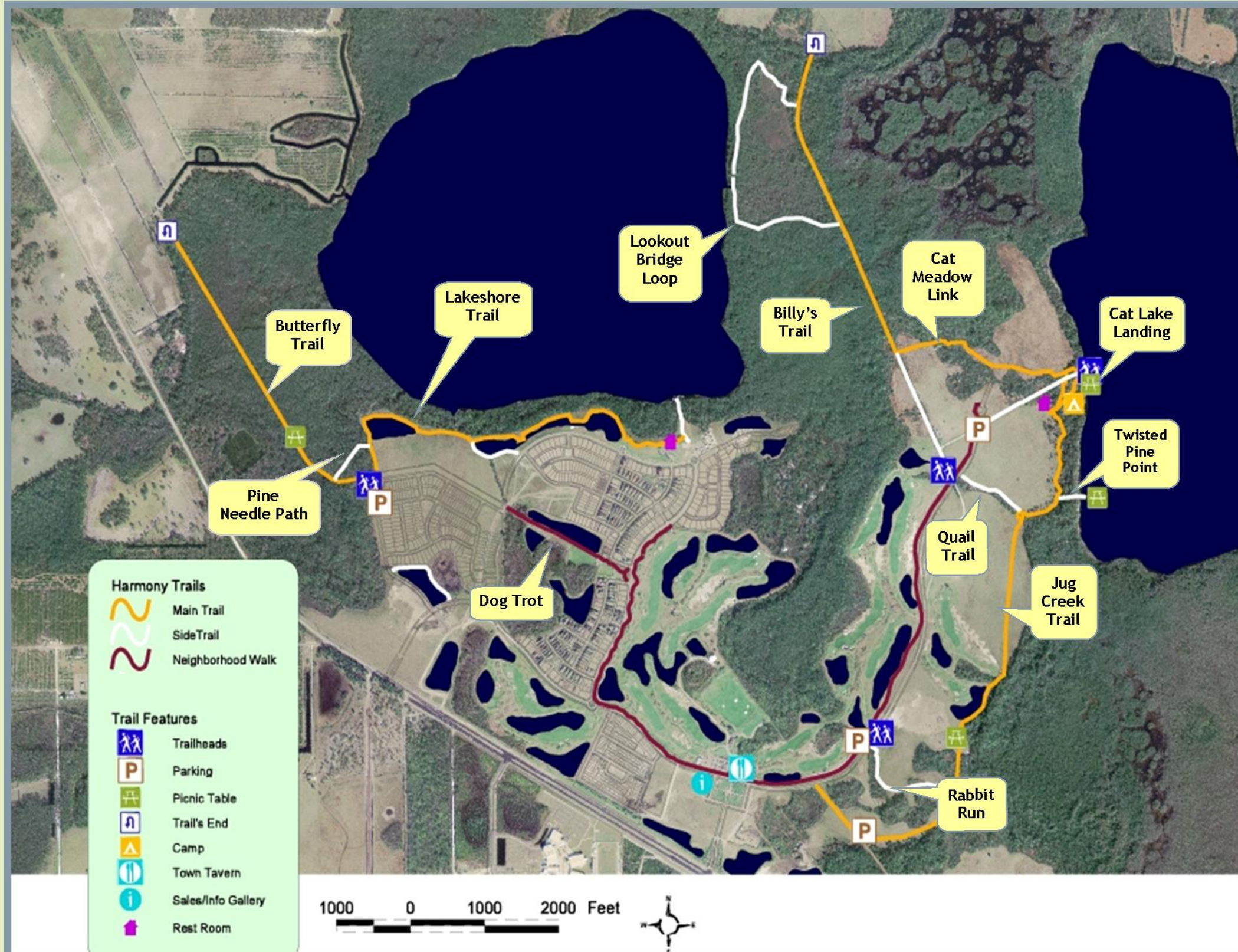


# Natural Trails of Harmony



HARMONY

## Allowed Users



Billy's Trail  
Butterfly Trail  
Dog Trot  
White Trails to  
Billy's Trail  
& Cat Lake  
Landing



Jug Creek Trail  
Cat Meadow Link  
Billy's Trail  
Butterfly Trail  
Dog Trot  
Pine Needle Trail  
Lakeshore Trail  
Quail Trail  
Rabbit Run  
White Trails to Billy's Trail  
& Cat Lake Landing  
Lookout Bridge Loop



Jug Creek Trail  
Cat Meadow Link  
Billy's Trail

## Trail Etiquette

Cyclists yield to horses & hikers, all yield to horses  
Step to the side to let others pass  
Keep the trail clean  
Carry your trash out  
Keep animals under control  
Dogs welcome if kept on a short leash  
Some trails pass through cattle pasture  
Close and latch all gates  
Do not feed wildlife  
Enjoy animals from a distance  
Report trail issues or maintenance needs to  
[info@harmonyfl.com](mailto:info@harmonyfl.com)

## Equestrians

Horse riding limited to Harmony residents and  
accompanied guests  
Please check in daily at the Sales & Information Gallery  
Signed waiver required-others will be treated  
as trespassers  
Protect yourself and others  
Riders of all ages to wear a helmet  
Do not wear headphones on the trail